

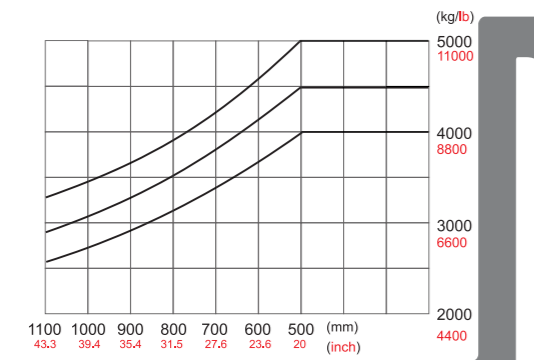
4.0-5.0t J series mast

Type	Mast fork height	Lowered	Overall height		Free lift		Tilt range		Capacity					
			With backrest	Without backrest	With backrest	Without backrest	FED	RED	Load capacity at 500mm					
									Single tire			Double tire		
Wide view mast	2500	1935	3670	3270	150	150	6	11	4000	4500	5000	4000	4500	5000
	2700	2035	3870	3470	150	150	6	11	4000	4500	5000	4000	4500	5000
	3000	2185	4170	3770	150	150	6	11	4000	4500	5000	4000	4500	5000
	3300	2335	4470	4070	150	150	6	11	4000	4500	5000	4000	4500	5000
	3500	2435	4670	4270	150	150	6	11	4000	4500	5000	4000	4500	5000
	3600	2485	4770	4370	150	150	6	11	4000	4500	5000	4000	4500	5000
	4000	2735	5170	4770	150	150	6	11	3800	4250	4750	4000	4500	5000
	4300	2900	5470	5070	150	150	6	6	3600	4000	4500	3800	4250	4750
	4500	3010	5670	5270	150	150	6	6	3400	3800	4250	3600	4050	4500
	4800	3175	5970	5570	150	150	6	6	3000	3350	3750	3200	3600	4000
5000	3285	6170	5770	150	150	6	6	2800	3150	3500	3000	3400	3750	
Wide view full free 2-stage mast	2500	1916	3670	3305	750	1115	6	11	4000	4500	5000	4000	4500	5000
	2750	2040	3920	3555	873	1238	6	11	4000	4500	5000	4000	4500	5000
	3000	2166	4170	3805	1000	1365	6	11	4000	4500	5000	4000	4500	5000
	3300	2316	4470	4105	1150	1515	6	11	4000	4500	5000	4000	4500	5000
Wide view full free 3-stage mast	4000	2020	5170	4805	850	1218	6	11	4000	4500	4750	4000	4500	5000
	4300	2120	5470	5105	950	1318	6	6	3400	3800	4200	3600	4050	4500
	4500	2185	5670	5305	1018	1380	6	6	3200	3600	4000	3400	3850	4250
	4800	2280	5970	5605	1110	1478	6	6	3000	3350	3750	3200	3600	4000
	5000	2350	6170	5805	1180	1548	6	6	2600	3150	3500	3000	3400	3750
	5500	2515	6670	6305	1348	1710	3	6	2250	2550	2850	2800	3100	3350
6000	2730	7170	6805	1560	1928	3	6	1700	1950	2200	2600	2800	2950	

8800-11000lb J series mast

Type	Mast fork height	Lowered	Overall height		Free lift		Tilt range		Capacity					
			With backrest	Without backrest	With backrest	Without backrest	FED	RED	Load capacity at 20 inch					
									Single tire		Double tire			
STD Duplex	98	76	144	129	5.9	5.9	6	11	8800	9900	11000	8800	9900	11000
	106	80	152	137	5.9	5.9	6	11	8800	9900	11000	8800	9900	11000
	118	86	164	148	5.9	5.9	6	11	8800	9900	11000	8800	9900	11000
	130	92	176	160	5.9	5.9	6	11	8800	9900	11000	8800	9900	11000
	138	96	184	168	5.9	5.9	6	11	8800	9900	11000	8800	9900	11000
	142	98	188	172	5.9	5.9	6	11	8800	9900	11000	8800	9900	11000
	157	108	204	188	5.9	5.9	6	11	8400	9400	10500	8800	9900	11000
	169	114	215	200	5.9	5.9	6	6	7900	8800	9900	8400	9400	10500
	177	119	223	207	5.9	5.9	6	6	7500	8400	9400	7900	8900	9900
	189	125	235	219	5.9	5.9	6	6	6600	7400	8300	7000	7900	8800
Full Free Lift	197	129	243	227	5.9	5.9	6	6	6200	6900	7700	6600	7500	8300
	98	75	144	130	29.5	43.9	6	11	8800	9900	11000	8800	9900	11000
	108	80	154	140	34.4	48.7	6	11	8800	9900	11000	8800	9900	11000
	118	85	164	150	39.4	53.7	6	11	8800	9900	11000	8800	9900	11000
Triplex	130	91	176	162	45.3	59.6	6	11	8800	9900	11000	8800	9900	11000
	157	80	204	189	33.5	48.0	6	11	8800	9900	10500	8800	9900	11000
	169	83	215	201	37.4	51.9	6	6	7500	8400	9300	7900	8900	9900
	177	86	223	209	40.1	54.3	6	6	7000	7900	8800	7500	8500	9400
	189	90	235	221	43.7	58.2	6	6	6600	7400	8300	7000	7900	8800
	197	93	243	229	46.5	60.9	6	6	5700	6900	7700	6600	7500	8300
	217	99	263	248	53.1	67.3	3	6	5000	5600	6300	6200	6800	7400
	236	107	282	268	61.4	75.9	3	6	3700	4300	4800	5700	6200	6500

LOAD CHART



Customization is available  
Products and specifications are  
subject to be changed without notice

Standard Feature

- AC drive system
- Emergency disconnect switch
- Rubber floor mat
- Grammer high elastic seat
- 2 Spools control valve
- Locked spring gas
- Front combined lamp
- 3 meters/118 inch 2-stage mast
- Adjustable steering column
- Rearview mirror
- Drive, lift, steering controlled
- Rear combined lamp
- Beeper
- Toolbox and file folder
- Hour meter, self-diagnose indicator

Optional Feature

- Front wheel & Rear wheel solid tire
- 3 or 4 spools control valve
- 4.3-6.0m/169-236inch 3-stage mast
- 2.5-4.5m/98.4-177inch 2-stage mast
- With attachment
- Other dimensions fork
- High capacity battery
- Higher or wider backrest

E-P Equipment Co.,LTD  
Let's grow together...

China: (Headquarters)  
E-P EQUIPMENT CO., LTD  
No. 121 YongHua Street, Shi Qiao Road, Xia Cheng  
Qu Hangzhou, China  
Tel: 86-571-28035676/28035633/28035657/28035653  
Fax: 86-571-28035665  
Email: info@ep-equip.com

USA:  
E-P EQUIPMENT, USA CORP.  
1770 Campton Road  
Inmam, SC 29349  
Tel: 864-472-2776  
Fax: 864-472-2765  
E-mail: info@ep-equip.com

Japan:  
E-P EQUIPMENT JAPAN  
#1052-16-10 Hirao, Inagi-shi  
Tokyo 206-0823 Japan  
Tel: 81-42-3506422  
Fax: 81-42-3506423  
E-mail: ep-japan@ep-equip.com

Korea:  
E-P EQUIPMENT KOREA  
1058-Ra Dong, Buck Yi-Dong,  
Ilsan/Gu, Koyang/Shi, Kyunggi/  
Du, Korea  
Tel: 82-31-9254100  
Fax: 82-31-9254102  
E-mail: ep@ep-equip.co.kr



Jseries

4.0/4.5/5.0T  
Electric Forklift



www.ep-equip.com  
www.epforklift.com



# EP Electric forklift Truck-J series

The distinctive features of the new 4-5t/8800-11000lb J series electric four-wheel forklift as follows:

- Versatility of use due to compact design and minimal operating space requirements. Compact dimensions combined with superb maneuverability.
- High stability, both when stationary and cornering, due to long wheelbase, low centre of gravity and wide tyres.
- Economy of operation, resulting from minimized maintenance costs, e.g. fully enclosed 3 phase AC asynchronous motors with high degree of efficiency maintenance free life.

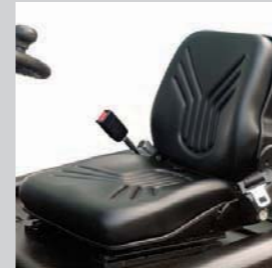
DANAHER MOTION made high-frequency controller incorporates a powerful microprocessor together with MOSFET power electronics.



New Multi-Display employed full dotted LCD is located on the steering column to improve visibility and manipulate-ability.



The adjustable steering Column ensure a comfortable working position.



Comfortable seat can be upgraded to a luxury semisuspension version.



### SOFT LANDING LIFT CYLINDER

During lowering fork with no load, fork speed is reduced just before touching ground to avoid collision noise with ground. The operator and those working near the forklift will appreciate the reduced noise.



The J series four-wheel truck has three independent braking systems:

- Regenerative braking system
- Hydraulic wet disc brake system
- Toggle-type parking brake



### AC Power System

Multiple benefits of the AC Power System include: fast response to operating commands, precise power control, compact components. Moreover, since the AC motor does not use contactors and brushes, these maintenance items will no longer be required. Operata will be able to feel the difference by the truck's New design and performance.

## J Serial 4.0-5.0t/8800-11000lb Electric Forklift Specification

No.		Manufacturer			DEP						
Specification	1	Model	CPD40JD1	CPD45JD1	CPD50JD1	CPD40JD1	CPD45JD1	CPD50JD1			
	2	Rated capacity	kg	4000	4500	5000	lb	8800	9900	11000	
	3	Load centre	mm	500	500	500	inch	20	20	20	
	4	Lifting height	mm	3000	3000	3000	inch	118	118	118	
	5	Free lifting height	mm	150	150	150	inch	6	6	6	
	6	Fork size	s×e×l	mm	50×150×1070	50×150×1070	50×150×1070	inch	2×6×42	2×6×42	2×6×42
	7	Tilting angle	F/B (α°/β°)	deg	6/12	6/12	6/12	deg	6/12	6/12	6/12
Dimensions	8	Overall Dimension	Length(to fork face)	mm	2965	3015	3015	inch	117	119	119
	9		Width	mm	1380	1380	1380	inch	54	54	54
	10		Height when mast lowered	mm	2185	2185	2185	inch	86	86	86
	11		Height when mast lifting	mm	4117	4117	4117	inch	162	162	162
	12		Height to safeguard	mm	2310	2310	2310	inch	91	91	91
	13	Height seat	mm	1185	1185	1185	inch	47	47	47	
	14	Turning radius	Min.	mm	2600	2600	2650	inch	102	102	104
	15	Overhang	mm	550	550	550	inch	22	22	22	
	16/17	Tread(Front/Rear)	mm	1130/1100	1130/1100	1130/1100	inch	45/43	45/43	45/43	
	18	Ground clearance	Min.	mm	219	219	219	inch	9	9	9
19	Wheelbase	mm	2000	2000	2000	inch	79	79	79		
20	Fork spread	Min. / Max.	mm	310/1200	310/1200	310/1200	inch	12/48	312/48	12/48	
21	Working aisle width with pallet (Ast)*	1000×1200 crossways	mm	4516	4566	4566	inch	178	184	184	
22		800×1200 lengthways	mm	4615	4665	4665	inch	182	184	184	
Performance	23	Speed	Travel(Laden)	km/h	14	13.5	13	mile/h	8.7	8.5	8.1
	24		Travel(Unladen)	km/h	14	13.5	13.5	mile/h	8.7	8.5	8.5
	25		Lifting(Laden)	mm/s	270	260	250	inch/s	10.6	10.2	9.8
	26		Lifting(Unladen)	mm/s	430	420	400	inch/s	16.9	16.5	15.7
	27		Lowing(Laden)	mm/s	410	410	410	inch/s	16.1	16.1	16.1
	28		Lowing(Unladen)	mm/s	420	430	440	inch/s	16.5	16.9	17.3
	29	Gradeability	Laden	%	14.5	14	13	%	14.5	14	13
	30		Unladen	%	15.5	15	14	%	15.5	15	14
	31	Max. Drawbar pull	Laden ( S2 5min)	N	24000	26000	27000	N	24000	26000	27000
	32	Service weight	Include battery box	kg	6600	6800	7100	lb	14500	14900	15600
33	Axle Loading (Front / Rear)	Laden	kg	9440/1160	9950/1350	10635/1315	lb	20800/2600	21900/3000	23400/2900	
34		Unladen	kg	3960/2640	3950/2850	3475/3475	lb	8700/5800	8690/6270	7600/7600	
35	Tyre	Front×2		250/15	250/15	250/15		250/15	250/15	250/15	
36		Rear×2		7.00-12	7.00-12	7.00-12		7.00-12	7.00-12	7.00-12	
Driven	37	Motor		kw	16.6	16.6	16.6	hp	22.3	22.3	22.3
	38			kw	25.4	25.4	25.4	hp	30	30	30
	39	Battery	Standard	V/Ah	80/700	80/700	80/700	V/Ah	80/700	80/700	80/700
	40	Battery weight include box (STD. Battery)	kg	2100	2100	2100	lb	4620	4620	4620	
	41	Controller	Type		MOSFET	MOSFET	MOSFET		MOSFET	MOSFET	MOSFET
	42		Manufacturer		Danaher Motion	Danaher Motion	Danaher Motion		Danaher Motion	Danaher Motion	Danaher Motion
43	Operating pressure for attachment	Mpa	17.5	17.5	17.5	Mpa	17.5	17.5	17.5		
44	Noise level	dB(A)	74	75	76	dB(A)	74	75	76		

Note: JD1 series means Danaher AC system (Traction AC+ Pump AC).

Ast\*: Include Safety Clearance=200mm

## LOAD CHART

